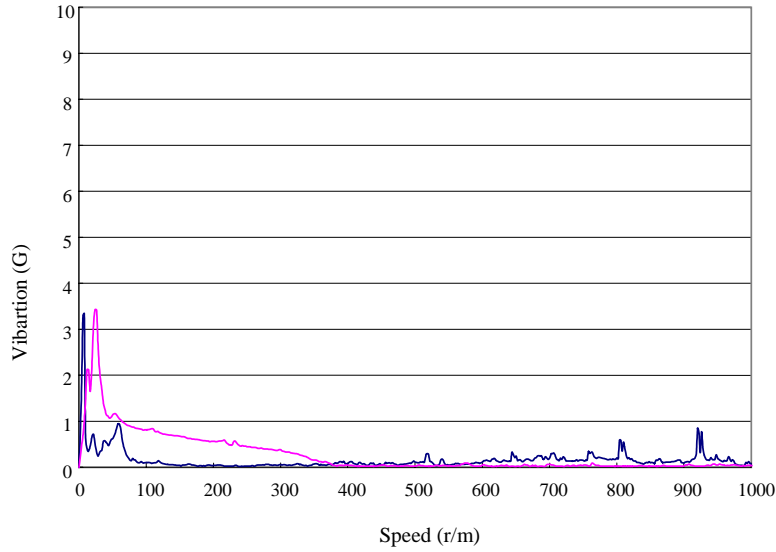


Comparison data

3 phase & 5 phase

- 3 phase
- 5 phase

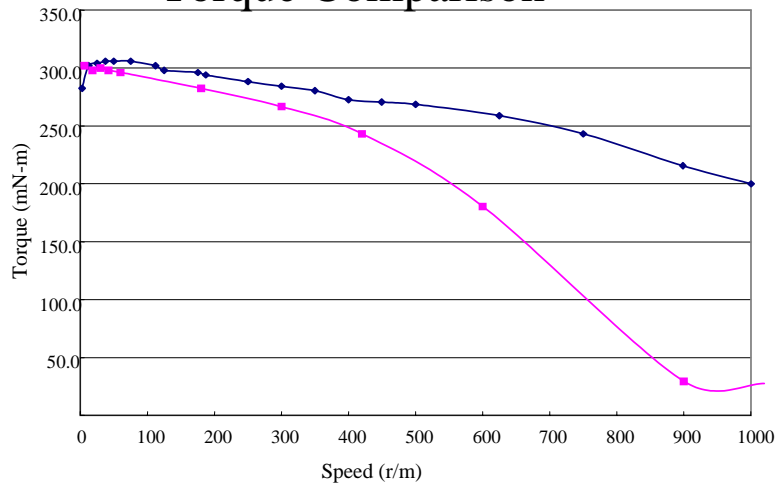
Vibration Comparison



Motor specs

	3 phase	5 phase
Model	KT60LM06	
Step angle	0.6 deg (at full step)	0.72 deg (at full step)
Holding torque	0.78 N-m	0.83 N-m
Rotor Inertia	265*10 ⁻² kg-cm	280*10 ⁻² kg-cm
Outline	60 sqr, L=58	60 sqr, L=58

Torque Comparison



Test conditions

	3 phase	5 phase
Model	KT60LM06	Oriental motor
Voltage	DC24V	DC24V
Current	2.4 A	2.0 A
Excitation mode	W2-3 phase	Half
Driver IC	STK673-010	-
Note	Inertia load: 80g-cm ² With RF1600-A5	Inertia load: 80g-cm ² With RF1600-A5

W/F Comparison

